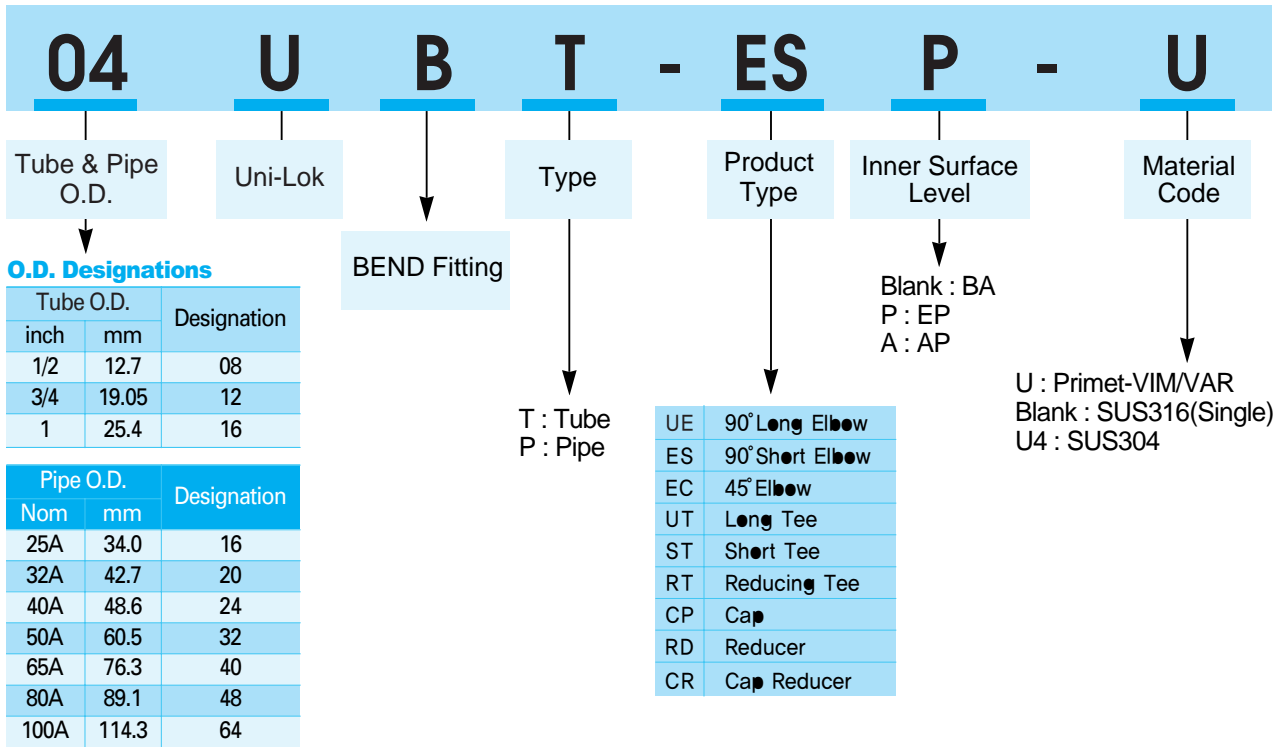


# TUBE/PIPE Clean Bend Fittings



# TUBE/PIPE Clean BEND Fittings

## How to Order



### INNER SURFACE LEVEL DESIGNATIONS

Conditions Suffix

BA : Max Ra 10 $\mu$  inch (Ry 2.5 $\mu$ m) Cut off : 0.8  
Measuring Length : 4.0

EP : Max Ra 5 $\mu$  inch (Ry 0.7 $\mu$ m) Cut off : 0.25  
Measuring Length : 1.25

### PIPE SIZE(A-SIZE)

Unit : mm

Normal Pipe	Outside Diameter at End	Wall Thickness at End		Straight End Length	Thinning Length	
		T			J	
	O.D.	5S	10S	L	5S	10S
8A	13.8	1.20	1.65	29	4	7
10A	17.3	1.20	1.65	36	4	7
15A	21.7	1.65	2.10	36	5	7
20A	27.2	1.65	2.10	36	5	7
25A	34.0	1.65	2.80	36	5	7
32A	42.7	1.65	2.80	46	5	7
40A	48.6	1.65	2.80	46	5	7
50A	60.5	1.65	2.80	46	5	7
65A	76.3	2.10	3.00	51	6	11
80A	89.1	2.10	3.00	51	6	11
100A	114.3	2.10	3.00	51	6	11

### WELD BEVEL END MANUFACTURE FORM

AUTOMATIC WELDING		
TYPE	FROM	
Elbow	8A ~ 100A	-
Tee	8A ~ 65A	80A ~ 100A
Cap	-	8A ~ 100A
Cap Reducer	8A ~ 100A	-
Reducing Tee	8A ~ 100A	-

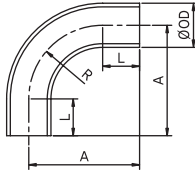
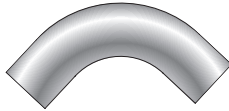
### TUBE SIZE(INCH-SIZE)

Unit : mm

Normal Tube	Outside Diameter at End	Wall Thickness at End	Straight End Length	Thinning Length
	O.D.			
1/4"	6.35	1.0 (0.89)	29	4
3/8"	9.53	1.0 (0.89)	36	4
1/2"	12.7	1.0, 1.24 (1.65)	36	5
5/8"	15.88	1.0 (1.24)	36	5
3/4"	19.05	1.24, 1.65	36	5
1"	25.4	1.65, 1.24	46	5

# TUBE/PIPE Clean BEND Fittings

## 90° Elbow



### Long Radius TUBE SIZE(Inch Size)

Part No.	O.D.		Thickness t	A	R	L
	(inch)	Diameter				
04UBT-UEP	1/4	6.35	1.0	49.0	20.0	29.0
06UBT-UEP	3/8	9.53	1.0	52.0	23.0	29.0
08UBT-UEP	1/2	12.7	1.24	54.0	25.0	29.0
12UBT-UEP	3/4	19.05	1.24	66.0	30.0	36.0
16UBT-UEP	1	25.4	1.65	69.0	33.0	36.0

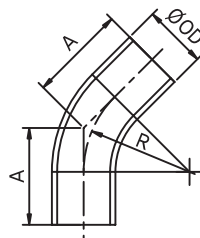
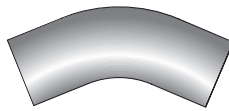
### Long Radius PIPE SIZE(A Size)

Part No.	Normal size(A)	O.D. Diameter	Thickness t	A	R	L
16UBP-UEP	25A	34.0	1.65	75	38.1	36.0
20UBP-UEP	32A	42.7	1.65	94	47.6	46.0
24UBP-UEP	40A	48.6	1.65	104	57.2	46.0
32UBP-UEP	50A	60.5	1.65	123	76.2	46.0
40UBP-UEP	65A	76.3	2.1	147	95.3	51.0
48UBP-UEP	80A	89.1	2.1	166	114.3	51.0
64UBP-UEP	100A	114.3	2.1	204	152.4	51.0

### Short Radius PIPE SIZE(A Size)

Part No.	Normal size(A)	O.D. Diameter	Thickness t	A	R	L
16UBP-ESP	25A	34.0	1.65	62	25.4	36.0
20UBP-ESP	32A	42.7	1.65	78	31.8	36.0
24UBP-ESP	40A	48.6	1.65	85	38.1	36.0
32UBP-ESP	50A	60.5	1.65	97	50.8	46.0
40UBP-ESP	65A	76.3	2.1	115	63.5	46.0
48UBP-ESP	80A	89.1	2.1	128	76.2	51.0
64UBP-ESP	100A	114.3	2.1	153	101.6	51.0

## 45° Elbow



### Long Radius TUBE SIZE(Inch Size)

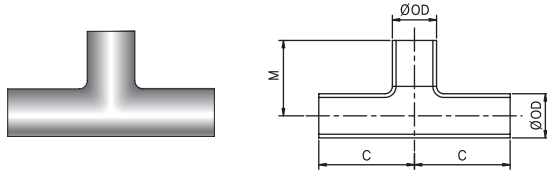
Part No.	O.D.		Thickness t	A	R
	(inch)	Diameter			
04UBT-ECP	1/4	6.35	1.0	38.0	20.0
06UBT-ECP	3/8	9.53	1.0	39.0	23.0
08UBT-ECP	1/2	12.7	1.24	40.0	25.0
12UBT-ECP	3/4	19.05	1.24	49.0	30.0
16UBT-ECP	1	25.4	1.65	50.0	33.0

### Long Radius PIPE SIZE(A Size)

Part No.	Nominal size (A)	O.D. Diameter	Thickness t	A	R
16UBP-ECP	25A	34.0	1.65	52	38.1
20UBP-ECP	32A	42.7	1.65	66	47.6
24UBP-ECP	40A	48.6	1.65	70	57.2
32UBP-ECP	50A	60.5	1.65	78	76.2
40UBP-ECP	65A	76.3	2.1	91	95.3
48UBP-ECP	80A	89.1	2.1	99	114.3
64UBP-ECP	100A	114.3	2.1	115	152.4

# TUBE/PIPE Clean BEND Fittings

## UNION TEE



### Long TUBE SIZE(Inch Size)

Part No.	O.D.		Thickness t	C	M
	(inch)	Diameter			
04UBT-UTP	1/4	6.35	1.0	35.0	35.0
06UBT-UTP	3/8	9.53	1.0	37.0	37.0
08UBT-UTP	1/2	12.7	1.24	39.0	39.0
12UBT-UTP	3/4	19.05	1.65	52.0	52.0
16UBT-UTP	1	25.4	1.65	55.0	55.0

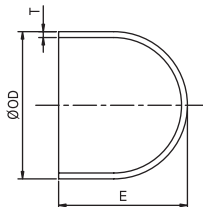
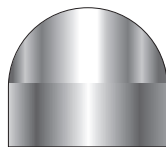
### Long PIPE SIZE(A Size)

Part No.	Nominal size (A)	O.D. Diameter	Thickness t	C	M
16UBP-UTP	25A	34.0	1.65	68	68
20UBP-UTP	32A	42.7	1.65	88	88
24UBP-UTP	40A	48.6	1.65	95	95
32UBP-UTP	50A	60.5	1.65	102	102
40UBP-UTP	65A	76.3	2.1	121	121
48UBP-UTP	80A	89.1	2.1	130	130
64UBP-UTP	100A	114.3	2.1	145	145

### Short PIPE SIZE(A Size)

Part No.	Nominal size (A)	O.D. Diameter	Thickness t	C	M
16UBP-STP	25A	34.0	1.65	59	68
20UBP-STP	32A	42.7	1.65	74	88
24UBP-STP	40A	48.6	1.65	77	95
32UBP-STP	50A	60.5	1.65	83	102
40UBP-STP	65A	76.3	2.1	97	121
48UBP-STP	80A	89.1	2.1	103	130
64UBP-STP	100A	114.3	2.1	116	145

## CAP



### TUBE SIZE(Inch Size)

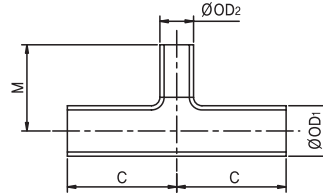
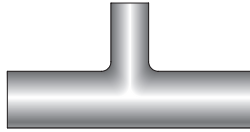
Part No.	O.D.		Thickness t	E
	(inch)	Diameter		
04UBT-CPP	1/4	6.35	1.0	12.7
06UBT-CPP	3/8	9.53	1.0	12.7
08UBT-CPP	1/2	12.7	1.24	12.7
12UBT-CPP	3/4	19.05	1.65	19.1
16UBT-CPP	1	25.4	1.65	25.4

### PIPE SIZE(A Size)

Part No.	Nominal size (A)	O.D. Diameter	Thickness t	E
16UBP-CPP	25A	34.0	1.65	38.1
20UBP-CPP	32A	42.7	1.65	38.1
24UBP-CPP	40A	48.6	1.65	38.1
32UBP-CPP	50A	60.5	1.65	38.1
40UBP-CPP	65A	76.3	2.1	38.1
48UBP-CPP	80A	89.1	2.1	50.8
64UBP-CPP	100A	114.3	2.1	63.5

# TUBE/PIPE Clean BEND Fittings

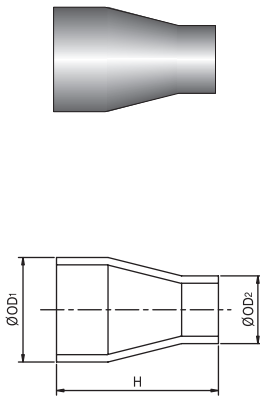
## REDUCING TEE



Part No.	O.D.1		O.D.2		Thickness t1	Thickness t2	C	M
	Nominal size	Diameter	Nominal size	Diameter				
16-12UBPT-RTP	25A	34.0	3/4"T	19.05	1.65	1.24	59.0	50.0
16-16UBPT-RTP			1"T	25.4	1.65	1.65	59.0	59.0
16-12UBP-RTP			20A	27.2	1.65	1.65	59.0	59.0
20-12UBPT-RTP	32A	42.7	3/4"T	19.05	1.65	1.24	68.0	62.0
20-16UBPT-RTP			1"T	25.4	1.65	1.65	68.0	62.0
20-16UBP-RTP			25A	34.0	1.65	1.65	68.0	62.0
24-12UBPT-RTP	40A	48.6	3/4"T	19.05	1.65	1.24	68.0	65.0
24-16UBPT-RTP			1"T	25.4	1.65	1.65	68.0	65.0
24-16UBP-RTP			25A	34.0	1.65	1.65	68.0	65.0
24-20UBP-RTP			32A	42.7	1.65	1.65	77.0	77.0
32-12UBPT-RTP	50A	60.5	3/4"T	19.05	1.65	1.24	68.0	71.0
32-16UBPT-RTP			1"T	25.4	1.65	1.65	68.0	71.0
32-16UBP-RTP			25A	34.0	1.65	1.65	68.0	71.0
32-20UBP-RTP			32A	42.7	1.65	1.65	83.0	83.0
32-24UBP-RTP			40A	48.6	1.65	1.65	83.0	83.0
40-12UBPT-RTP	65A	76.3	3/4"T	19.05	2.10	1.24	72.0	79.0
40-16UBPT-RTP			1"T	25.4	2.10	1.65	72.0	79.0
40-20UBP-RTP			32A	42.7	2.10	1.65	88.0	90.0
40-24UBP-RTP			40A	48.6	2.10	1.65	88.0	90.0
40-32UBP-RTP			50A	60.5	2.10	1.65	88.0	90.0
48-12UBPT-RTP	80A	89.1	3/4"T	19.05	2.10	1.24	72.0	85.0
48-16UBPT-RTP			1"T	25.4	2.10	1.65	72.0	85.0
48-24UBP-RTP			40A	48.6	2.10	1.65	88.0	96.0
48-32UBP-RTP			50A	60.5	2.10	1.65	88.0	96.0
48-140UBP-RTP			65A	76.3	2.10	2.10	103	103
64-12UBPT-RTP	100A	114.3	3/4"T	19.05	2.10	1.24	72.0	98.0
64-16UBPT-RTP			1"T	25.4	2.10	1.65	72.0	98.0
64-24UBP-RTP			40A	48.6	2.10	1.65	88.0	109
64-32UBP-RTP			50A	60.5	2.10	1.65	88.0	109
64-40UBP-RTP			65A	76.3	2.10	2.10	116	116
64-48UBP-RTP			80A	89.1	2.10	2.10	116	116

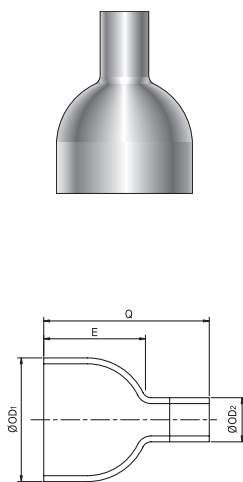
# TUBE/PIPE Clean BEND Fittings

## REDUCER



Part No.	O.D.1		O.D.2		Thickness t	H
	Nominal size	Diameter	Nominal size	Diameter		
16-12UBP-RDP	25A	34.0	20A	27.2	1.65	120
20-12UBP-RDP	32A	42.7	20A	27.2	1.65	125
20-16UBP-RDP			25A	34.0	1.65	125
24-16UBP-RDP	40A	48.6	25A	34.0	1.65	130
24-20UBP-RDP			32A	42.7	1.65	130
32-16UBP-RDP	50A	60.5	25A	34.0	1.65	140
32-20UBP-RDP			32A	42.7	1.65	140
32-24UBP-RDP			40A	48.6	1.65	140
40-20UBP-RDP	65A	76.3	32A	42.7	2.10	165
40-24UBP-RDP			40A	48.6	2.10	165
40-32UBP-RDP			50A	60.5	2.10	165
48-24UBP-RDP			40A	48.6	2.10	170
48-32UBP-RDP	80A	89.1	50A	60.5	2.10	170
48-40UBP-RDP			65A	76.3	2.10	170
64-32UBP-RDP	100A	114.3	50A	60.5	2.10	180
64-40UBP-RDP			65A	76.3	2.10	180
64-48UBP-RDP			80A	89.1	2.10	180

## CAP REDUCER



Part No.	O.D.1		O.D.2		Thickness t	E	Q
	Nominal size	Diameter	Nominal size	Diameter			
16-12UBPT-CRP	25A	34.0	3/4"T	19.05	1.65	38.1	80.0
16-16UBPT-CRP			1"T	25.4	1.65	38.1	80.0
16-12UBP-CRP			20A	27.2	1.65	38.1	80.0
20-12UBPT-CRP	32A	42.7	3/4"T	19.05	1.65	38.1	80.0
20-16UBPT-CRP			1"T	25.4	1.65	38.1	80.0
20-16UBP-CRP	40A	48.6	25A	34.0	1.65	38.1	80.0
24-16UBPT-CRP			1"T	25.4	1.65	38.1	80.0
24-16UBP-CRP			25A	34.0	1.65	38.1	80.0
24-20UBP-CRP	50A	60.5	32A	42.7	1.65	38.1	90.0
32-16UBPT-CRP			1"T	25.4	1.65	38.1	80.0
32-20UBP-CRP	65A	76.3	32A	42.7	1.65	38.1	90.0
32-24UBP-CRP			40A	48.6	1.65	38.1	90.0
40-16UBPT-CRP			1"T	25.4	2.10	38.1	80.0
40-24UBP-CRP	80A	89.1	40A	48.6	2.10	38.1	90.0
40-32UBP-CRP			50A	60.5	2.10	38.1	90.0
48-16UBPT-CRP	100A	114.3	1"T	25.4	2.10	50.8	92.0
48-32UBP-CRP			50A	60.5	2.10	50.8	102
48-40UBP-CRP			65A	76.3	2.10	50.8	110
64-16UBPT-CRP	100A	114.3	1"T	25.4	2.10	63.5	105
64-40UBP-CRP			65A	76.3	2.10	63.5	125
64-48UBP-CRP			80A	89.1	2.10	63.5	125



# LINE UP

**Tube Fittings**



**Uni-primet Weld & Face Seal Fittings**



**PTFE Fittings**



**Diaphragm / Bellows Valve**



**Needle Valves**



**Ball Valves**



**Hex Ball Valves**



**Check Valves**



**Manifold Valves**



**Filters**



**TUBE/PIPE Clean BEND Fittings**



**Tubes AP/BA/EP**





**유니온금속공업(주)**  
UNION METAL INDUSTRIAL CO.,LTD.

**본사 및 공장**

인천광역시 남동구 고잔동 725-13번지  
남동공단 152블럭 12롯트  
TEL:(032)822-6600(대) FAX:(032)821-6604  
<http://www.unilok.com>  
E-mail : unilok@unilok.com

**서울직매장**

서울특별시 구로구 구로동 604-1  
구로기계공구상가 D-31-110호  
TEL:(02)2676-6673(대) FAX:(02)2679-6673

**Head Office and Factory**

152 Block-12Lot, Namdong Industrial Complex,  
725-13, Gojan-Dong, Namdong-Gu, Incheon,  
KOREA.  
TEL:+82-32-822-6600 FAX:+82-32-821-6604  
<http://www.unilok.com>  
E-mail:unilok@unilok.com

**Seoul Office**

D-31-110, Guro Tools Center.  
604-1, Guro-Dong, Guro-Gu, Seoul, KOREA.  
TEL:+82-2-2676-6673 FAX:+82-2-2679-6673