

Bellows Valves



Features

- Low actuation pressure
- Installation can be made either panel-mount or bottom-mount
- Handle with an open / close indicator is standardized
- 316L(Single Vacuum Melting) Electro Polished Body
- Size : 1/4" ~ 1/2"
- End Connection : Face Seal, Tube Butt Weld, Uni-Lok

Testing

- Every valve helium leak tested to a rate of 1×10^{-9} std cm³/s at the all sealings

Cleaning

- Ultrahigh-purity cleaning with state of arts DI water(18M Ω) Automatic Cleaning Machines.

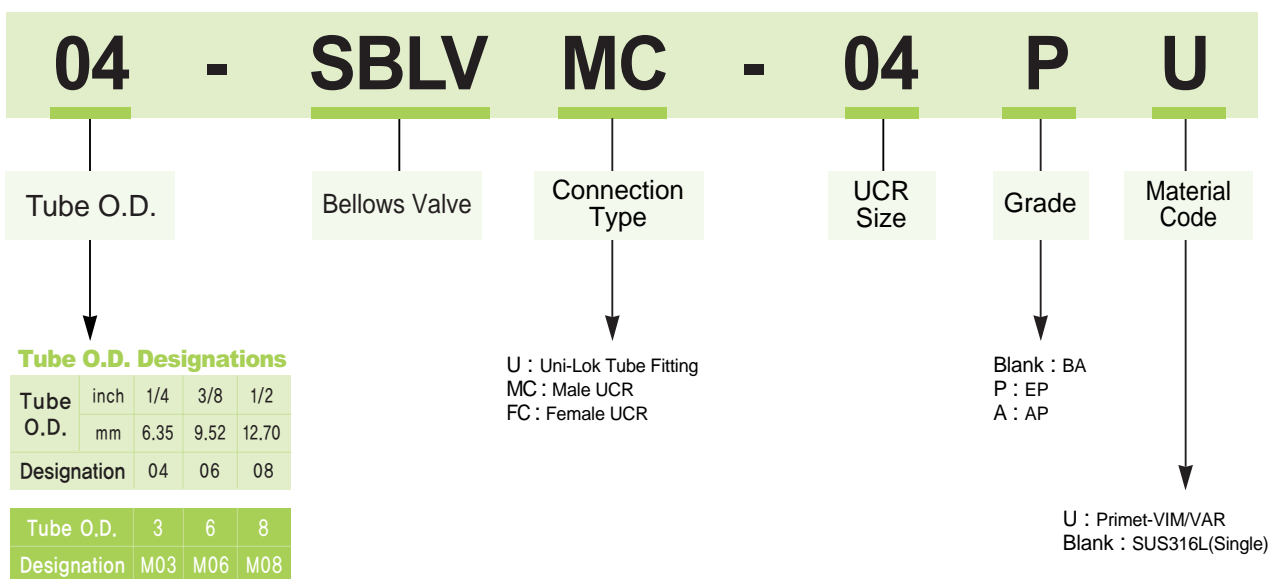
Packing

- Uni-Lok every valve with UCR end connections TS special cleaning and packaging in accordance with Uni-Lok clean and packaging method.

Safe Valve Selection

- When selecting a valve, the total system design must be considered to ensure safe, trouble-free performance.
- Valve function, materials compatibility adequate ratings, proper installation, and maintenance are the responsibility of the designer or user.

How to Order





Product Grade

Grade	AP	BA	EP
		Ry : Max.3.0 μ m	Ry : Max.0.7 μ m
Inner	Ry : Max.25 μ m	Avg. : 10 μ inch Ra	Avg. : 5 μ inch Ra
Surface	Cut Off Length : 2.5mm	Cut Off Length : 0.8mm	Cut Off Length : 0.25mm
Roughness	Measuring Length : 12.5mm	Measuring Length : 4mm	Measuring Length : 1.25mm
Polishing	Machining Fishing	Machining Fishing	Electro Polishing Fishing

Specifications

Size	1/4"	3/8", 1/2"	3/4"
Cv Value	0.3	0.7	0.7
Office Size	4.5mm	8mm	12mm
Max.Working Pressure (G.)	10kgf / cm ² (0.98MPa)		
Max.Working Temp	-10°C ~ 80°C		
Internal Leakage Allowance (He) Test Pressure : Max. 1*0.1 ² Torr Holding Time : Min 30sec.	Min. 4*10 ⁻⁹ atm.cc/sec (4*10 ⁻¹⁰ Pa. m ³ /s)		
External Leakage Allowance (He) Test Pressure : Max. 1*0.1 ² Torr Holding Time : Min 1min.	Min. 4*10 ⁻⁹ atm.cc/sec (4*10 ⁻¹⁰ Pa. m ³ /s)		

Material

No.	Description	Material
1	Body	SUS316L Single Melt SUS316L Double Melt(Primet)
2	Disk	PCTFE
3	Bellows	SUS316L
4	Handle	ALUMINUM

SBLVU Series (Uni-Lok TUBE Fitting)



Specification

End Connection : Uni-Lok TUBE Fitting
 Max. Operating Temperature : -28°C(-20°F) ~ 93°C(200°F)

Max. Operating Pressure psig (bar)	
Round Handle	250 (17.3)
Toggle Handle	125 (8.6)
Normally Open	250 (17.3)
Normally Close	125 (8.6)
Open & Close	250 (17.3)

Materials of Construction

No.	Description	Material
1	Body	SUS316L Single Melt(VOD)
		SUS316L Double Melt(VIM-VAR)
		SUS304
2	Disk	PCTFE
3	Bellows	SUS316L
4	Handle	ALUMINUM

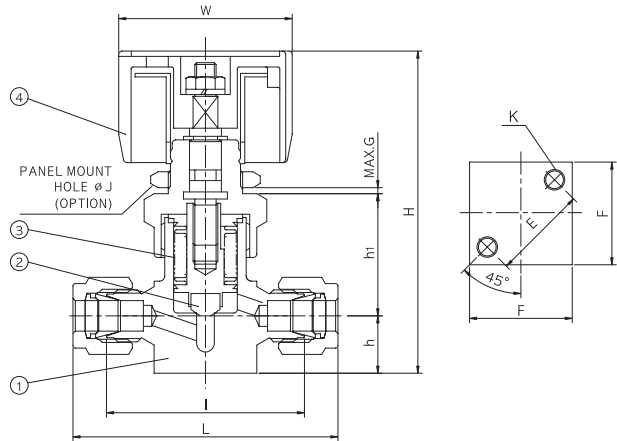


Table of Dimension

Unit : mm

Part No.	Applicable Tube		H	h1	h	L	W	F	K	MAX G	E
	Nom.Size	O.D.									
04-SBLVU-P	1/4	6.35	64.0	30.0	14.0	64.6	42.0	25.0	M5	2.0	23.0
06-SBLVU-P	3/8	9.53	71.0	37.0	16.0	81.6	42.0	25.0	M5	2.0	23.0
08-SBLVU-P	1/2	12.70	71.0	37.0	16.0	86.8	42.0	25.0	M5	2.0	23.0

Note : Dimensions are reference only, subject to change without prior notice.

SBLVMC Series (Male UCR Fitting)



Specification

End Connection : Male UCR Fitting

Max. Operating Temperature : -28°C(-20°F) ~ 93°C(200°F)

Max. Operating Pressure psig (bar)	
Round Handle	250 (17.3)
Toggle Handle	125 (8.6)
Normally Open	250 (17.3)
Normally Close	125 (8.6)
Open & Close	250 (17.3)

Materials of Construction

No.	Description	Material
1	Body	SUS316L Single Melt(VOD)
		SUS316L Double Melt(VIM-VAR)
		SUS304
2	Disk	PCTFE
3	Bellows	SUS316L
4	Handle	ALUMINUM

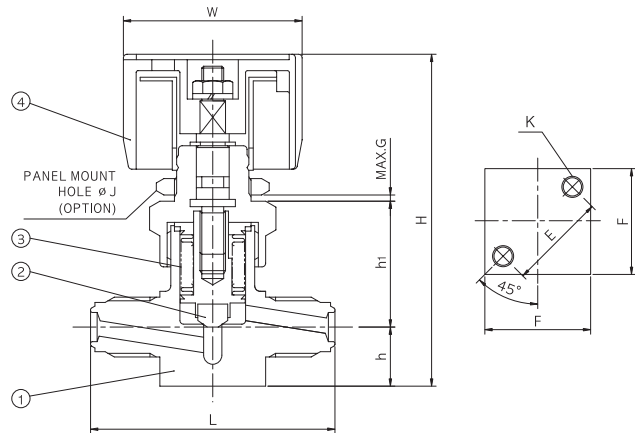


Table of Dimension

Unit : mm

Part No.	Applicable Tube		H	h1	h	L	W	F	K	MAX G	E
	Nom. Size	O.D.									
SBLVMC-04P	1/4	6.35	64.0	30.0	14.0	58.0	42.0	25.0	M5	2.0	23.0
SBLVMC-06P	3/8	9.53	71.0	37.0	16.0	60.0	42.0	25.0	M5	2.0	23.0
SBLVMC-08P	1/2	12.70	71.0	37.0	16.0	60.0	42.0	25.0	M5	2.0	23.0

Note : Dimensions are reference only, subject to change without prior notice.

SBLVFC Series (Female UCR Fitting)



Specification

End Connection : Female UCR Fitting
 Max. Operating Temperature : -28°C(-20°F) ~ 93°C(200°F)

Max. Operating Pressure psig (bar)	
Round Handle	250 (17.3)
Toggle Handle	125 (8.6)
Normally Open	250 (17.3)
Normally Close	125 (8.6)
Open & Close	250 (17.3)

Materials of Construction

No.	Description	Material
1	Body	SUS316L Single Melt(VOD)
		SUS316L Double Melt(VIM-VAR)
		SUS304
2	Disk	PCTFE
3	Bellows	SUS316L
4	Handle	ALUMINUM

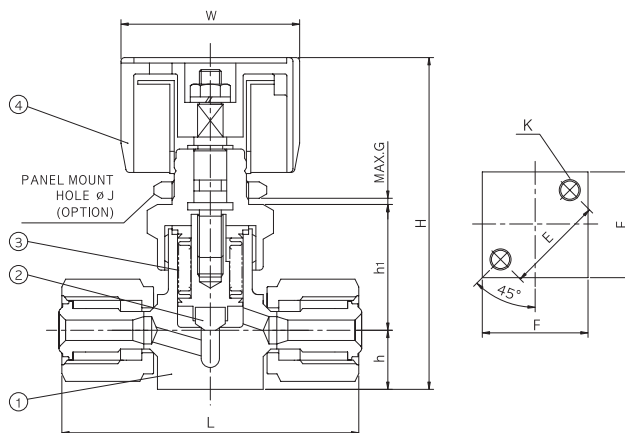


Table of Dimension

Unit : mm

Part No.	Applicable Tube		H	h1	h	L	W	F	K	MAX G	E
	Nom. Size	O.D.									
SBLVFC-04P	1/4	6.35	64.0	30.0	14.0	70.5	42.0	25.0	M5	2.0	23.0
SCLVFC-06P	3/8	9.53	71.0	37.0	16.0	90.0	42.0	25.0	M5	2.0	23.0
SBLVFC-08P	1/2	12.70	71.0	37.0	16.0	90.0	42.0	25.0	M5	2.0	23.0

Note : Dimensions are reference only, subject to change without prior notice.

LINE UP

Tube Fittings



Uni-primet Weld & Face Seal Fittings



PTFE Fittings



Diaphragm / Bellows Valve



Needle Valves



Ball Valves



Hex Ball Valves



Check Valves



Manifold Valves



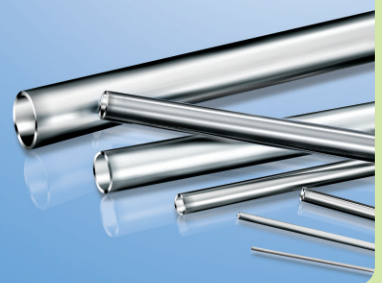
Filters



TUBE/PIPE Clean BEND Fittings



Tubes AP/BA/EP





유니온금속공업(주)
UNION METAL INDUSTRIAL CO.,LTD.

본사 및 공장

인천광역시 남동구 고잔동 725-13번지
남동공단 152블럭 12롯트
TEL:(032)822-6600(대) FAX:(032)821-6604
<http://www.unilok.com>
E-mail : unilok@unilok.com

서울직매장

서울특별시 구로구 구로동 604-1
구로기계공구상가 D-31-110호
TEL:(02)2676-6673(대) FAX:(02)2679-6673

Head Office and Factory

152 Block-12Lot, Namdong Industrial Complex,
725-13, Gojan-Dong, Namdong-Gu, Incheon,
KOREA,
TEL:+82-32-822-6600 FAX:+82-32-821-6604
<http://www.unilok.com>
E-mail:unilok@unilok.com

Seoul Office

D-31-110, Guro Tools Center,
604-1, Guro-Dong, Guro-Gu, Seoul, KOREA,
TEL:+82-2-2676-6673 FAX:+82-2-2679-6673